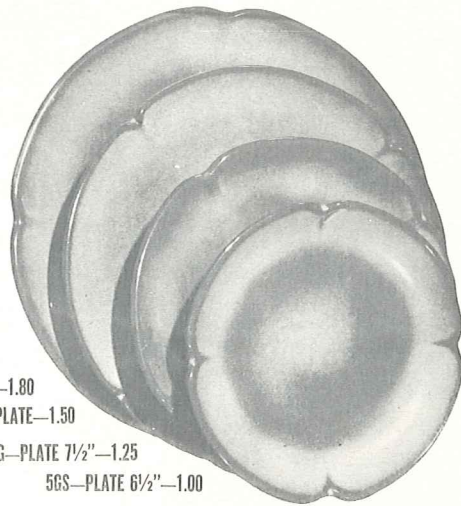




5V—BAKER 2 QT.—3.00

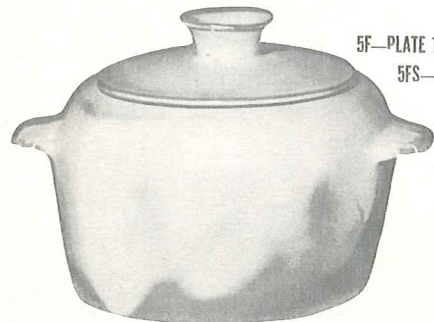


5F—PLATE 10"—1.80

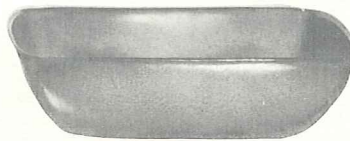
5FS—9" PLATE—1.50

5G—PLATE 7 1/2"—1.25

5GS—PLATE 6 1/2"—1.00



5W—BAKER 3 QT.—4.00



5NS—9" VEGETABLE—2.00



5DC—DEMITASSE CUP—.65

5DE—DEMITASSE SAUCER—.65



5A—12 OZ. CREAMER—1.00



5CL—MUG 12 OZ.—1.00

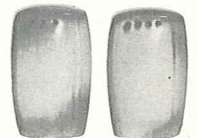


5B—SUGAR WITH LID—1.50

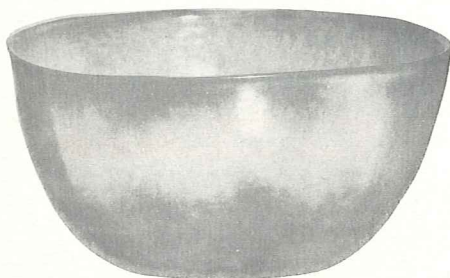


5C—8 OZ. CUP—.75

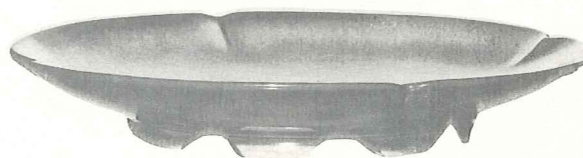
5E—5 1/2" SAUCER—.75



5HS—SALT & PEPPER—1.50



5N—4 1/2 QT. BOWL—5.00



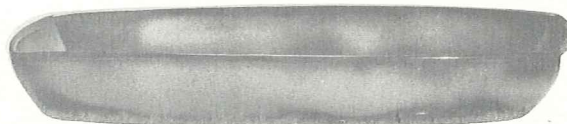
5FC—15" CHOP PLATE—7.00



5L—12 OZ. TUMBLER—.75



5LC—6 OZ. JUICE—.75



5P—17" PLATTER—5.00

5Q—13" PLATTER—2.50



5DB—6 OZ. SUGAR—.75



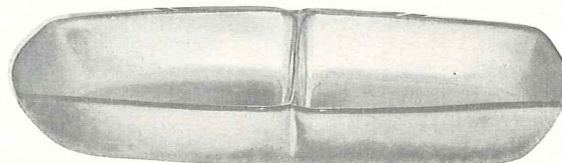
5DA—6 OZ. CREAMER—.75



5XL—BOWL 20 OZ.—1.25

5X—CEREAL 14 OZ.—1.00

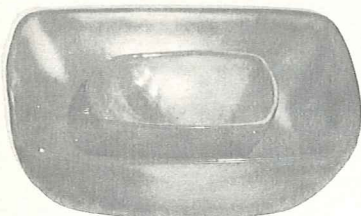
5XS—FRUIT 9 OZ.—.80



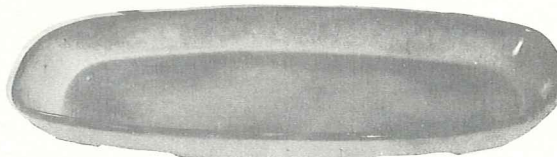
5QD—13" DIVIDED BOWL—2.50



5TL—TEAPOT, 12 CUP—4.00

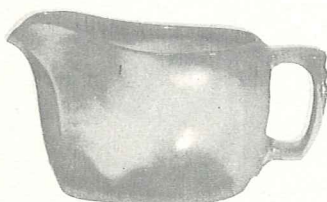


5ND—9" CHEESE DIP—2.50



5QS—13" PLATTER—2.00

5PS—9" TRAY—1.25



5S—20 OZ. GRAVY BOAT—1.50



5T—6 CUP TEAPOT—2.50



5M—MUG 16 OZ.—1.20



5D—3 QT. PITCHER—3.50